



Matteo Mancuso

RICCARDO OLIVA and GIANLUCA PELLERITO
TECHNICAL - LOGISTIC RIDER

STAFF ON TOUR

1	Matteo Mancuso	Artist
2	Gianluca Pellerito	Drum
3	Riccardo Oliva	Bass
4	Simone Zoldan	F.O.H Engineer
5	Andrea Iozzia	Light Designer
6	Alessandro Uccello	Monitor Engineer/Backliner
7	Michele Mozzicato	Manager

FOH and PA System:

The audio system and the lighting system must be supplied by the Organizer as indicated below.

The elements indicated below must be ascertained by the head of the audio system and by the head of the lighting system **at least 10 days before the show**, in order to verify the effective availability of all the required material.

For any clarification on the audio and lighting material required, please contact:

Please therefore send the complete technical data sheet of the resident service via email to the production manager and a copy to the technicians 10 days before the show.

Professional audio system required:

- Adequate to the structural characteristics of the venue, coverage and power proportionate to the size of the venue, capable of producing 104 db / spl for the whole concert area.
- We need line array PA system on LR, Sub on separate send, and matrix for front fill
- **Favorite brands: LAcoustic / D&B / Vue Audiotechnik / Martin / Eaw / Meyer**
- We need 1 audio assistant on stage, 1 FOH/PA man assistant, 1 Monitor assistant, and 1 light designer.
- 2 x Sidefill, Full Range, minimum 3-way (Subwoofer + Tops)

F.O.H:

Digital mixer required:

- Minimum 32 microphone channels, 16 stereo bus output

Favorite brands and models: Midas Hd96 or M32, Yamaha CL5 or Dm Series, Digico ecc...

The mixer must be in the best possible listening position, in the center of the venue and at the correct distance from the stage

MONITOR CONSOLE: If is Possible stage right

Analog Splitter F.O.H Console/Monitor Console No Shred Gain

Monitor Digital mixer required:

Favorite brands and models: Midas M32, Allen&heath Sq7, Avantis, Yamaha CL5...

N 2 talkback Microphone with On/Off Switch Monitor and f.o.h. Consoles

Wedge Monitors:

We need N°6 wedge monitors (possible Bi-Amp), N°1 Drum Fill Top and sub and 2 Side Fill Top and Sub.

- **Favorite brands: LAcoustic / D&B / Vue Audiotechnik / Martin / Eaw / Meyer**

Output List Matteo Mancuso Trio Riccardo Oliva and Gianluca Pellerito:

Aux	Instrument		Wedge
1-2 Stereo	Bass	Personal In ear	
3-4 Stereo	Drum	Personal In ear	
5-6 Stereo	Guitar	Personal In ear	
7-8 Stereo	Bass Spare		2
9-10 Stereo	Guitar		2
11 Mono	Drum Fill	1Top	1Top
12 Mono	Drum Fill	1Sub	1Sub
13-14	Sid Fill	Top and Sub	1 Top e 1 Sub stage Left e 1 Top e 1 Sub Stage Right
15-16	Stage Mixing Monitor Engineer		2
Small Wedge Monitor Talkback	Monitor Console	Or Intercom	1
Small wedge Monitor Talkback	F.o.h. Console	Or Intercom	1



Backline:

N 1 Guitar table workstation 1,20Cm X 50

Bass:

- Head: Little Mark 3 or Little Mark Tube 800
- Cabinet: Markbass Standard 104HR
- Bass Stand
- N1 Laptop stand

N 1 Drum (Yamaha) serie Custom ready on stage: Kick 20/22-N°2 Snare 14x5,5 ,14x6- Tom 10-Tom 12-Floor Tom 14- HH stand + Professional Kick drum pedal (DW5000-DW9000) + N 6 Stand for drum cymbals - cymbals Meinl Byzance , Zildjian Serie K: HH 14 or 15 or 16 - Crash 17 - Crash 19 - Crash 18 - ride 20/21- Splash 6 or 7- Splash 10
Remo Skins (Controlled sound, Emperor, Pinstripe, Ambassador)- 2 big fat snare 14'.

N 1 Drum throne for the Drummer.

N 1 Drum Riser 3x2 meters, height 20/40cm

N 1 Speakon - Jack for Bass Head to Cabinet

N 1 Speakon - Speakon for Bass Head to Cabinet

N 1 Bass Stand.

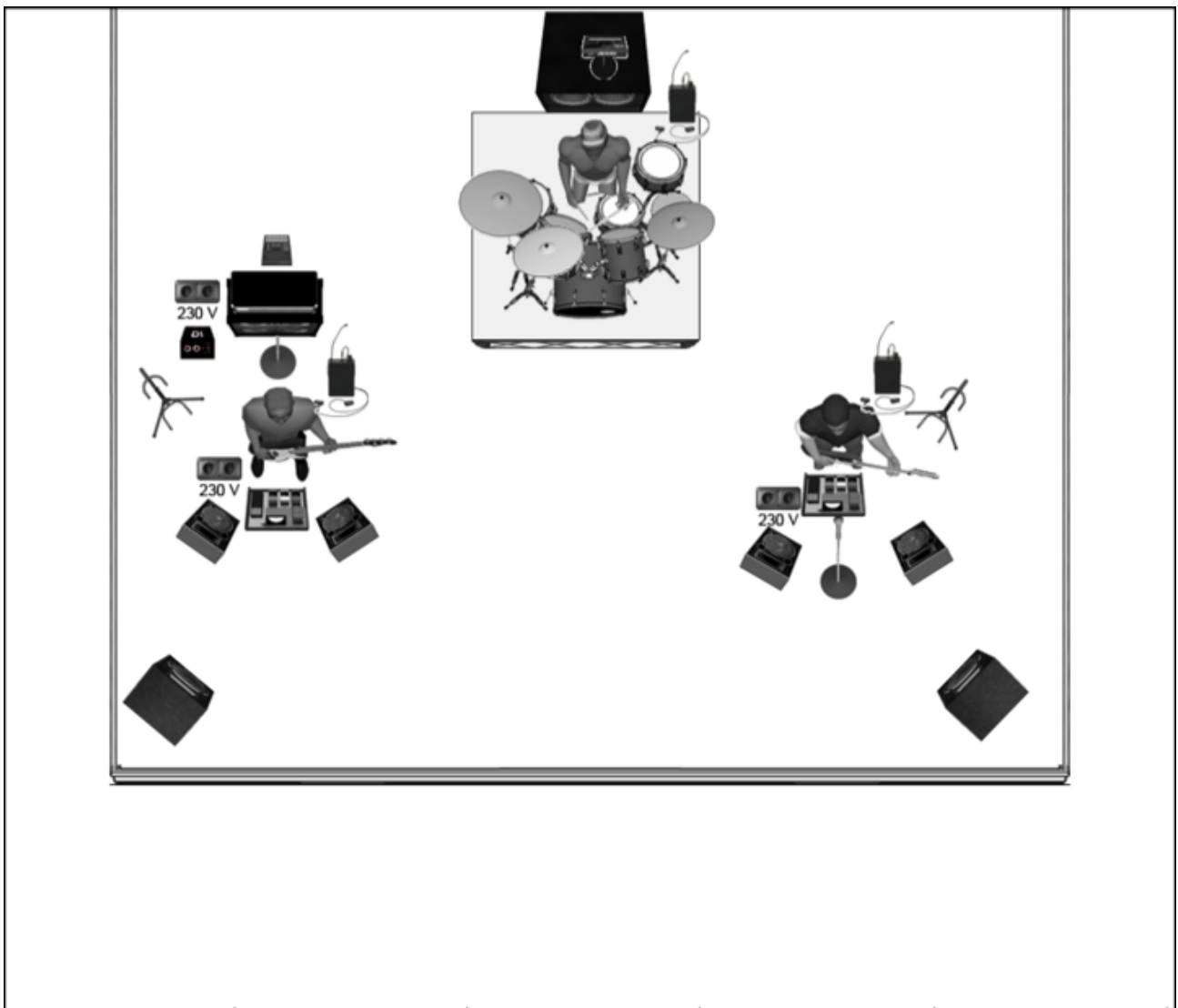
N 2 Guitar Stand.

N 4 Cable wire Jack Mt 3

N 2 Power supply / Plug for Guitar and Bass



Stage Plan:



All audio equipment must be properly assembled, wired and tested before production arrives. The radio systems must be correctly set up, and must guarantee perfect coverage over the entire surface of the stage.

Channel List Matteo Mancuso Trio Riccardo Oliva and Gianluca Pellerito:

CH	Instruments	Mic / D.I.	Stand	Personal
1	Kick In	Beta 91		
2	Kick out	Beta 52	Small Stand	
3	Snare 1 Up	Sm 57	Clip or Small Stand	
4	Snare 1 Bottom	Akg 414 or similar	Clip or Small Stand	
5	Snare 2 Up	Sm 57	Clip or Small Stand	
6	Snare 2 Bottom	Akg 414 or similar	Clip or Small Stand	
7	Hit Hat	Akg 451 or similar	Tall Stand	
8	Tom 1	Opus 88 beyerdynamic		
9	Tom 2	Opus 88 beyerdynamic		
10	Floor Tom	Opus 88 beyerdynamic		
11	Oh L	Akg 414 or similar	Tall Stand	
12	Oh R	Akg 414 or similar	Tall Stand	
13	Bass Line	DI box Bss/Radial		
14	Bass Mic	Sennheiser md421 or Sm 57	Tall Stand	
15	Samples E. Gtr L			Personal Snake XLR
16	Samples E. Gtr R			Personal Snake XLR
17	Samples Ac Gtr L			Personal Snake XLR
18	Samples Ac Gtr R			Personal Snake XLR
19	Percussion Mono			Personal Snake XLR
20	Click			Personal Snake XLR
21	Gtr L	XLR		
22	Gtr R	XLR		
23	Gtr L/Mono	DI box Bss		
24	Vox Gtr	Sm 58	Tall Stand	
25	Gtr L Spare	DI box Bss		
26	Gtr R Spare	DI box Bss		

LIGHTS:

Fixtures:

- 8x Hybrid moving heads (ex. Robe Pointe/Megapointe or similar)
- 18x LEDWash 19x40 moving heads (ex. Claypaky Midi-B or similar)
- 8x Beam moving heads (ex. Claypaky Sharpy or similar)
- 8x Floodlights/strobes RGBW (ex. SGM Q7 or similar not in extended mode)
- 10x blinders 2 or 4 lamps in 10 dimmer channels (or good LED Blinders in 1ch mode)
- 2x haze machines with fans

Lighting Desks (preferences):

- Chamsys MagicQ MQ250 (first choice) or MQ 80/70/50 + monitor touch
- MA Light MA2 Light o MA3 Light + NPU
- Avolites Diamond, Tiger, Arena (No quartz, no pearl, no T)

Trusses and positions:

- 1x front truss
- 1x back truss
- Same lengths of the stage, heights based on the venue

Positions:

- Front truss: 7x washes, 4x blinders
- Back truss: 7x washes, 8x spots (hanged down); 4x floodlights, 2x blinders (hanged up)
- Side lights (2 per side): 2x washes (front stage), 2x washes (in the same line of the drums)
- Back-Lights on the ground: 8x beam, 4x floodlights, 3x blinders, hazers

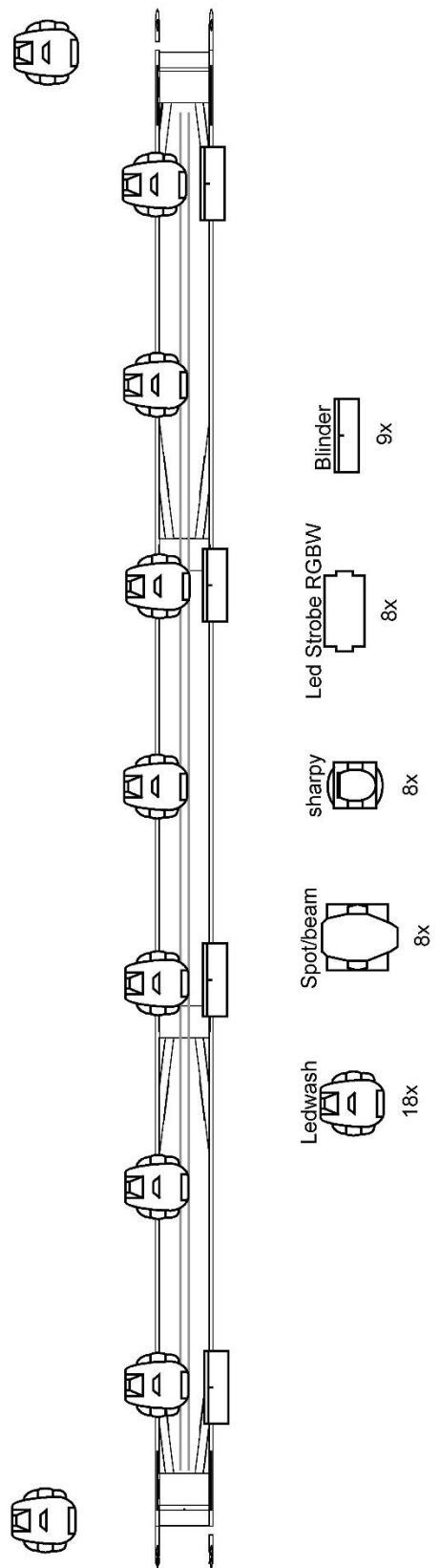
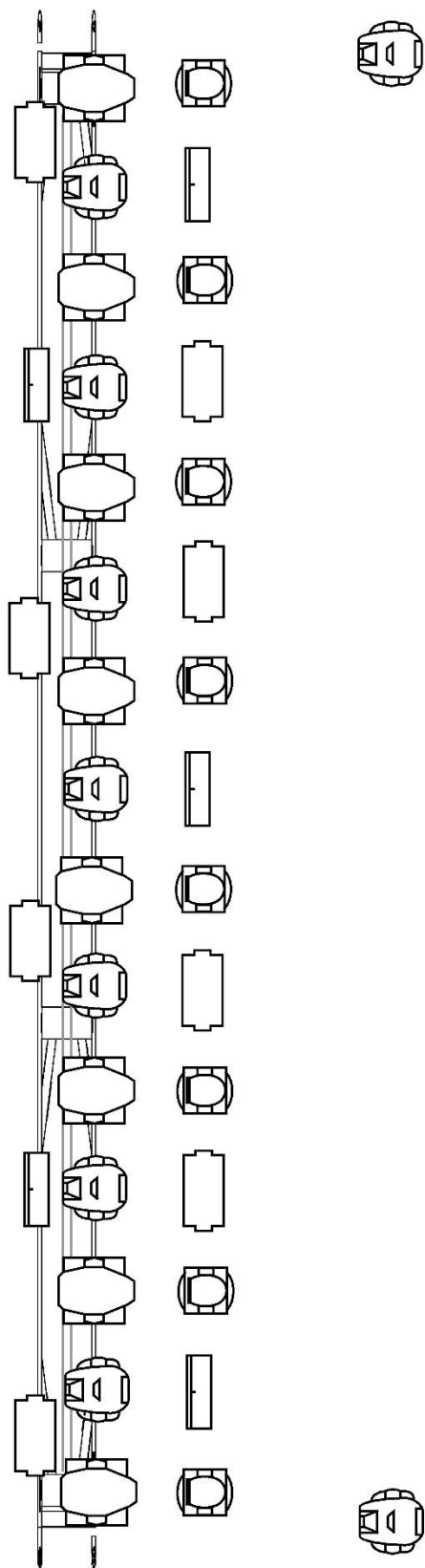
Notes (important):

- In venues with fixed lighting design on the roof, we request only the lights to put on the ground (read Side Lights and Back-Lights)
- Back-lights must to be min.2mt far from drums, where is possible.
- We request a light technician for any assistance to the lighting desk.
- Brands, models of fixtures and quantity, every modification and/or adaptation must be communicate via e-mail or by phone before the day of the show.
- Is recommended to use professional lights and safety, first of all.
- Set-up, patch and check of lights must be done before our load-in.



Matteo Mancuso

LIGHTING PLOT:





Name list:

Managment.: Michele Mozzicato +39 335357633

Sound Engineer.: Simone Zoldan +39 3393367362

Email: simone.zoldan@gmail.com

Monitor Enginner/Backliner: Alessandro Uscello +39 328 3672988

Email: uccelloalexbird@gmail.com

Light Designer: ANDREA IOZZIA

+39 339 6234998

Email andreaiozzia22@gmail.com)

ROOMING LIST (Four-Star Hotel)

1	Matteo Mancuso	Double for single use
2	Gianluca Pellerito	Double for single use
3	Riccardo Oliva	Double for single use
4	Simone Zoldan	Double for single use
5	Andrea Iozzia	Double for single use
6	Alessandro Uccello	Double for single use
7	Michele Mozzicato	Double for single use

2025 ARTIST AND PRODUCTION, DRESSING ROOM AND CATERING RIDER

We have a person allergic to milk

Available and stocked in Dressing Room:

(7) Black towels

(1) Coffee Machine (sugar)

(24) Still Water Bottles

- Assorted organic whole fruits - orange/bananas/apples etc....

- Assorted sandwiches (No cheese)

- Assorted slices of Pizza.

(2) Bottles of good quality red wine (cabernet, merlot or similar)

- Ice for consumption - refilled and stocked throughout the day

- Some sweet snacks (Mars, Twix, Bounty, ecc...)

- Some local sweet snacks

- Some chips (Normal and Paprika)

- Some protein bars

(6) Regular Red Bull

- Salted dried fruit mix

(12) bottles of assorted IPA/Amber/local beers

(1) Hendricks London dry gin 70 cl Bottle

- Some tonic water fever-tree Mediterranean

- Some soft drinks (Coca Cola, Sprite, ecc...)